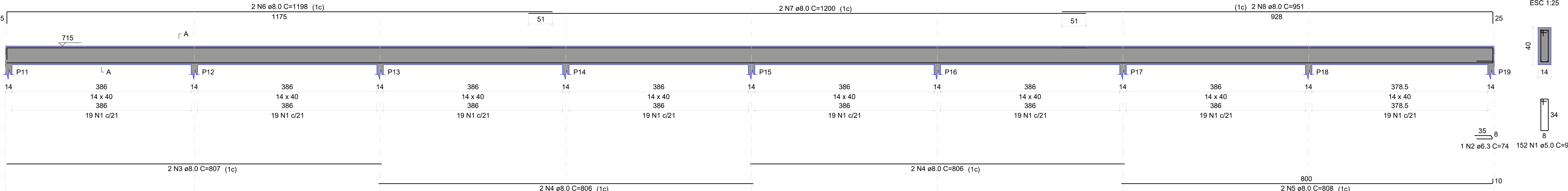
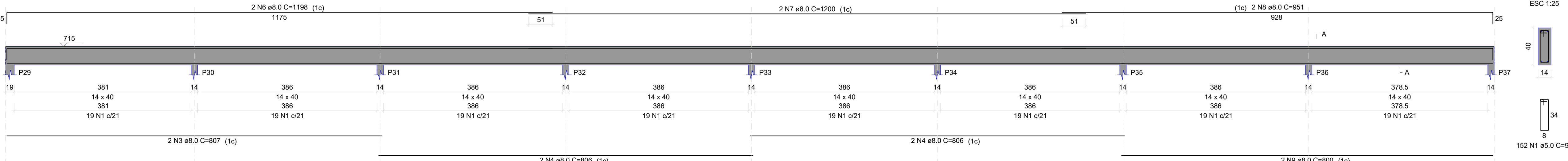


Vigas de respaldo (nível 715)

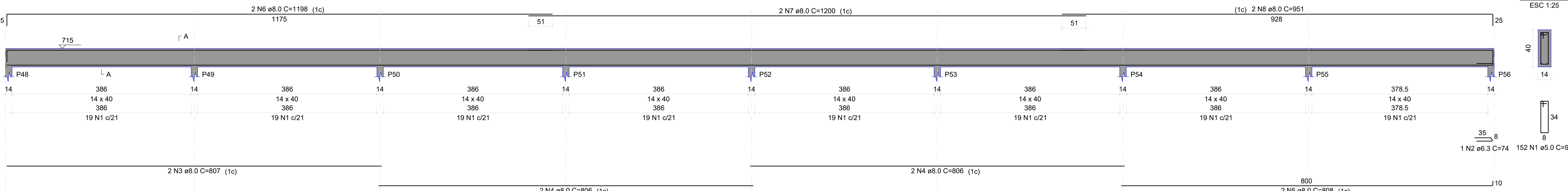
V1
ESC 1:50



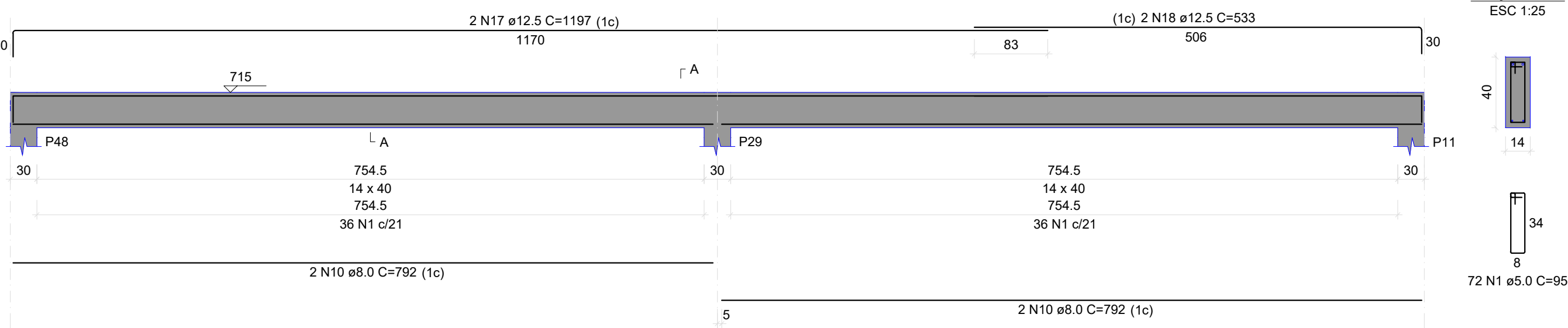
V2
ESC 1:50



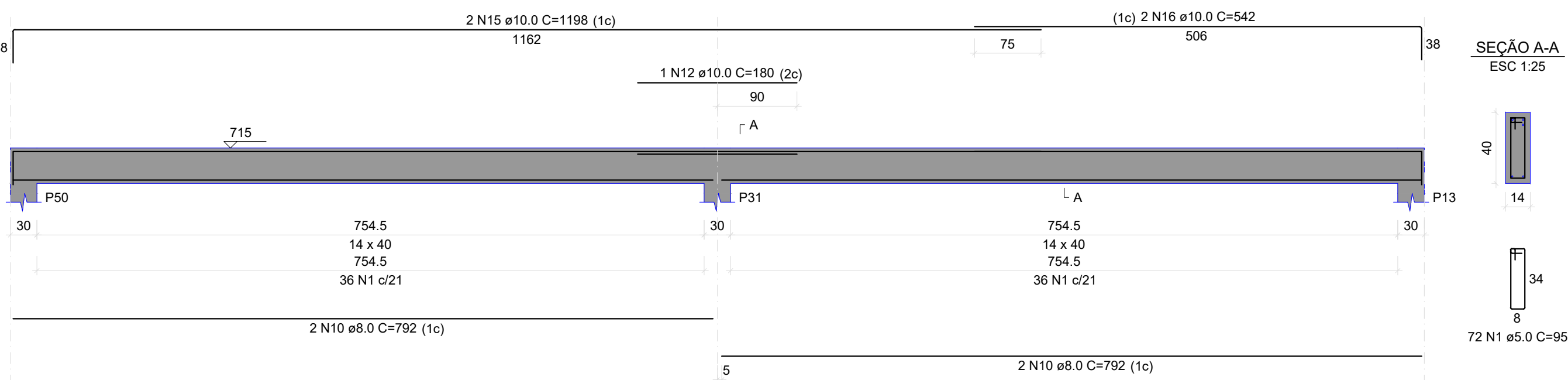
V3
ESC 1:50



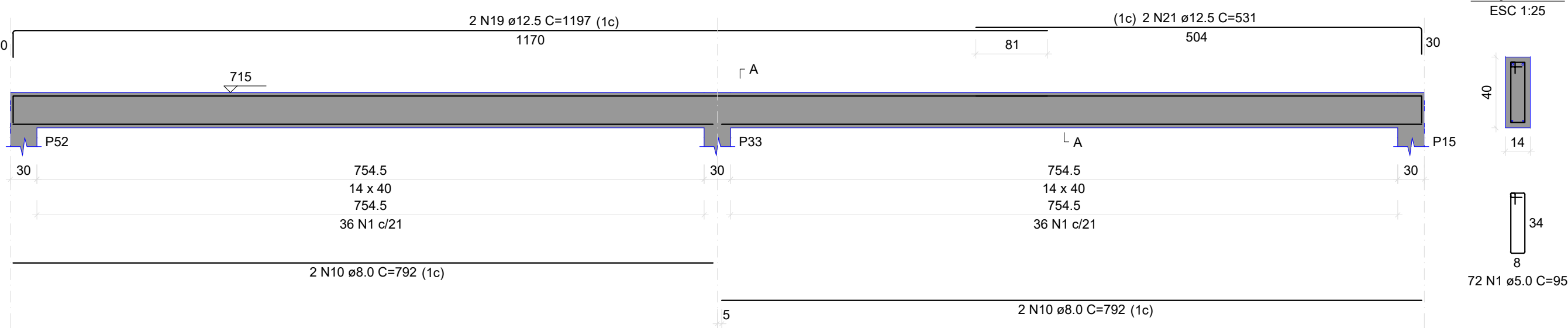
V4
ESC 1:50



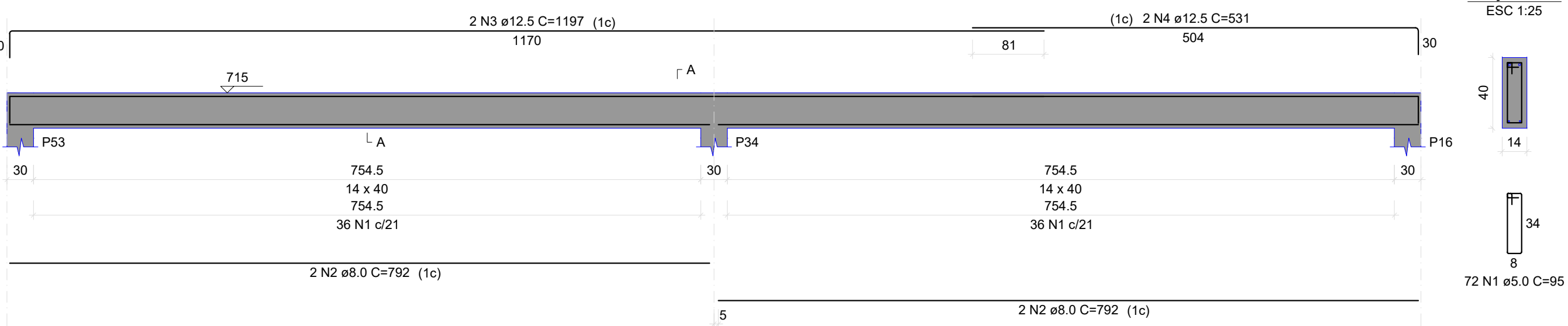
V6
ESC 1:50



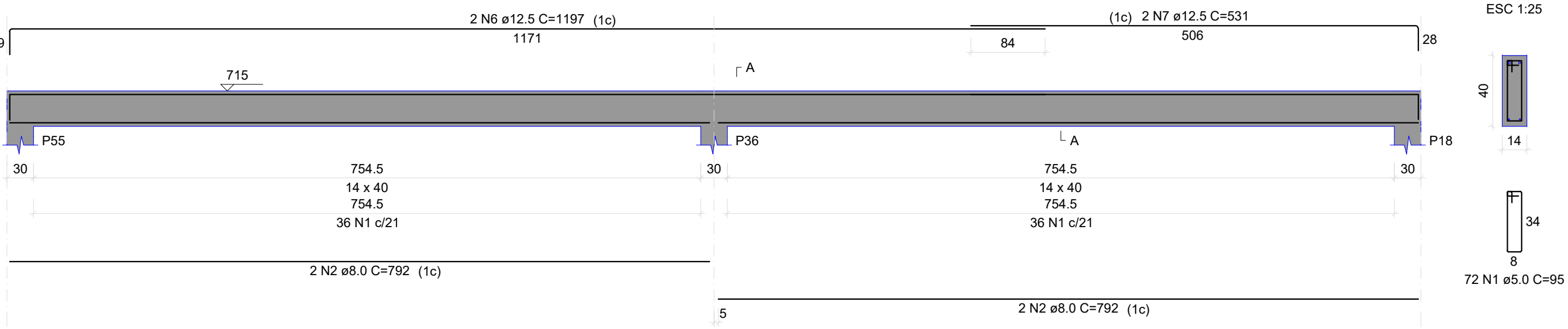
V8
ESC 1:50



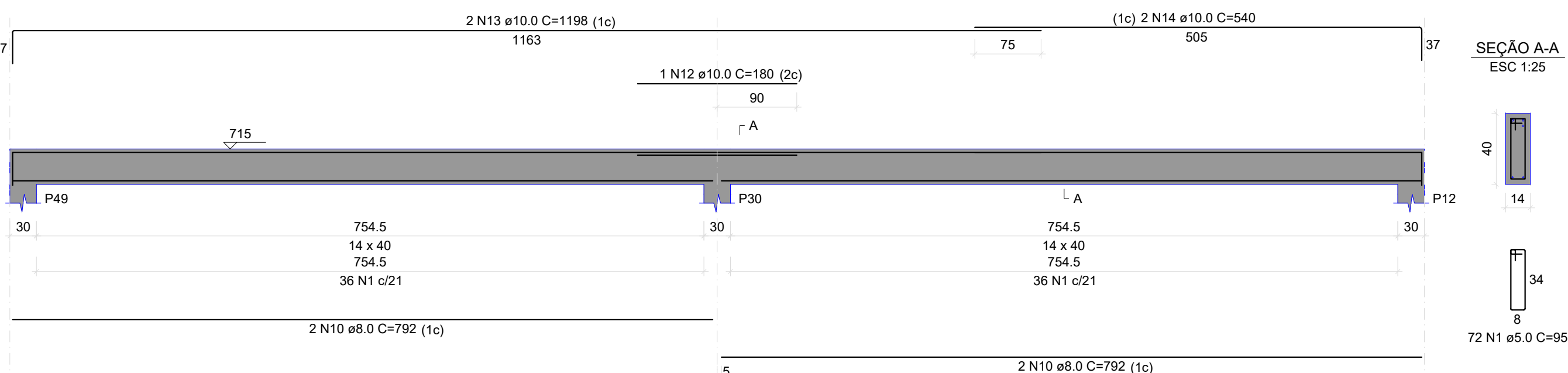
V9
ESC 1:50



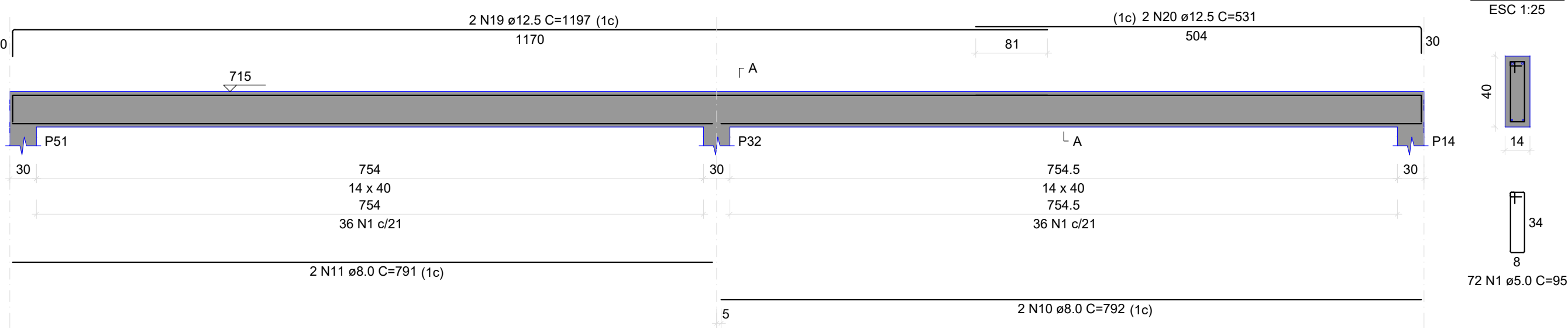
V11
ESC 1:50



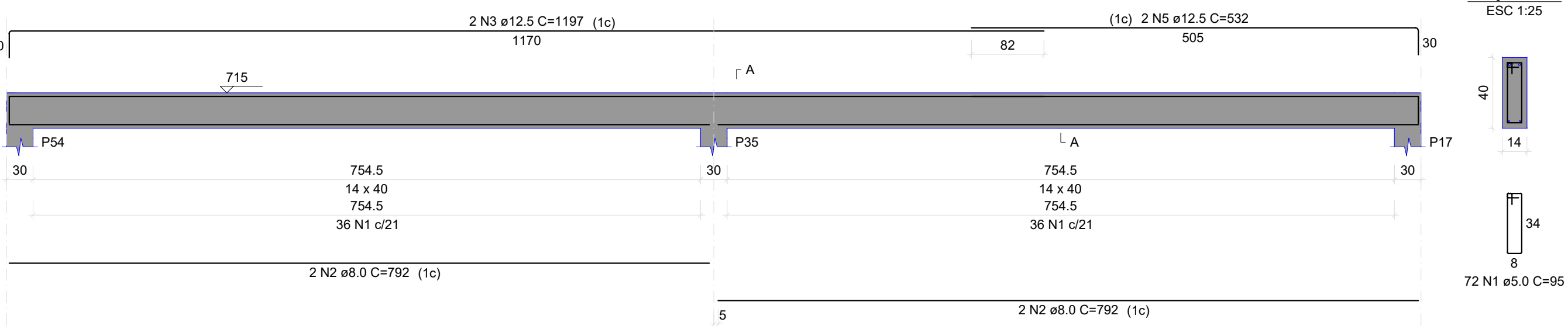
V5
ESC 1:50



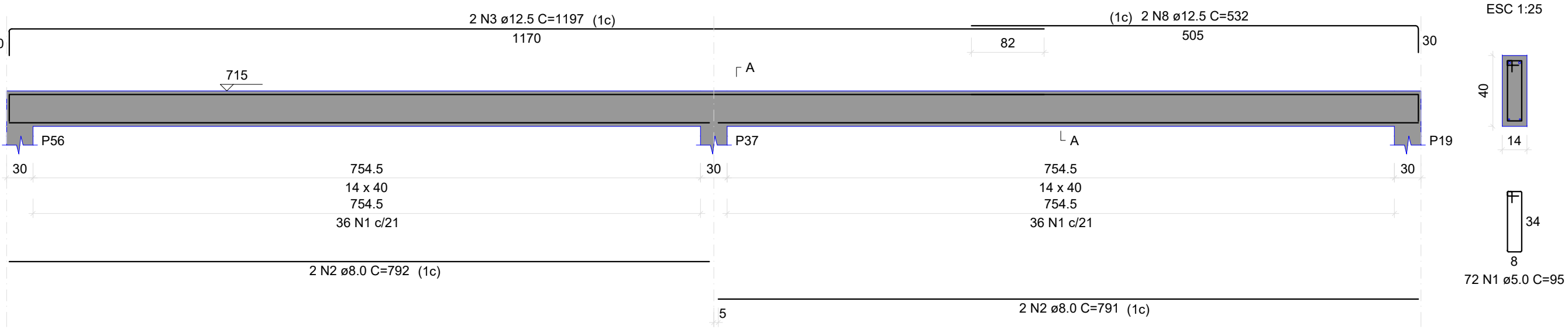
V7
ESC 1:50



V10
ESC 1:50



V12
ESC 1:50



| RELAÇÃO DO AÇO | | | | | |
|----------------|----|-----------|-------|-------------|--------------|
| AÇO | N | DIAM (mm) | QUANT | C.UNIT (cm) | C.TOTAL (cm) |
| CA50 | 1 | 5.0 | 1632 | 95 | 155040 |
| CA50 | 2 | 6.3 | 4 | 74 | 296 |
| CA50 | 3 | 8.0 | 12 | 807 | 9684 |
| CA50 | 4 | 8.0 | 24 | 806 | 19344 |
| CA50 | 5 | 8.0 | 8 | 808 | 6464 |
| CA50 | 6 | 8.0 | 12 | 1198 | 14376 |
| CA50 | 7 | 8.0 | 12 | 1200 | 14400 |
| CA50 | 8 | 8.0 | 12 | 951 | 11412 |
| CA50 | 9 | 8.0 | 4 | 800 | 3200 |
| CA50 | 10 | 8.0 | 36 | 792 | 28512 |
| CA50 | 11 | 8.0 | 4 | 791 | 3164 |
| CA50 | 12 | 10.0 | 4 | 180 | 720 |
| CA50 | 13 | 10.0 | 4 | 1198 | 4792 |
| CA50 | 14 | 10.0 | 4 | 540 | 2160 |
| CA50 | 15 | 10.0 | 4 | 1198 | 4792 |
| CA50 | 16 | 10.0 | 4 | 542 | 2168 |
| CA50 | 17 | 12.5 | 4 | 1197 | 4788 |
| CA50 | 18 | 12.5 | 4 | 533 | 2132 |
| CA50 | 19 | 12.5 | 8 | 1197 | 9576 |
| CA50 | 20 | 12.5 | 4 | 531 | 2124 |
| CA50 | 21 | 12.5 | 4 | 531 | 2124 |

| RESUMO DO AÇO | | | |
|--------------------------------------|-----------|-------------|-----------------|
| AÇO | DIAM (mm) | C.TOTAL (m) | PESO + 10% (kg) |
| CA50 | 6.3 | 3 | 0.8 |
| CA50 | 8.0 | 1105.6 | 479.8 |
| CA50 | 10.0 | 146.4 | 89.2 |
| CA50 | 12.5 | 207.4 | 219.8 |
| CA50 | 5.0 | 1550.4 | 262.8 |
| PESO TOTAL (kg) | | 799.8 | |
| CA50 | | 799.8 | |
| CA60 | | 282.8 | |
| Volume de concreto (C-25) = 19.72 m³ | | | |
| Área de forma = 331.14 m² | | | |

| RELAÇÃO DO AÇO | | | | | |
|----------------|---|-----------|-------|-------------|--------------|
| AÇO | N | DIAM (mm) | QUANT | C.UNIT (cm) | C.TOTAL (cm) |
| CA60 | 1 | 5.0 | 576 | 95 | 54720 |
| CA50 | 2 | 8.0 | 32 | 792 | 25344 |
| CA50 | 3 | 12.5 | 12 | 1197 | 14364 |
| CA50 | 4 | 12.5 | 4 | 531 | 2124 |
| CA50 | 5 | 12.5 | 4 | 532 | 2128 |
| CA50 | 6 | 12.5 | 4 | 1197 | 4788 |
| CA50 | 7 | 12.5 | 4 | 531 | 2124 |
| CA50 | 8 | 12.5 | 4 | 532 | 2128 |

| RESUMO DO AÇO | | | |
|-------------------------------------|-----------|-------------|-----------------|
| AÇO | DIAM (mm) | C.TOTAL (m) | PESO + 10% (kg) |
| CA50 | 8.0 | 253.4 | 110 |
| CA60 | 12.5 | 278.6 | 293 |
| CA60 | 5.0 | 547.2 | 92.8 |
| PESO TOTAL (kg) | | 403 | |
| CA50 | | 403 | |
| CA60 | | 92.8 | |
| Volume de concreto (C-25) = 7.16 m³ | | | |
| Área de forma = 120.24 m² | | | |

CARIMBO DE APROVAÇÕES:



TIPO DE USO:

PROJETO CEASA CATALÃO

ENDEREÇO DA OBRA: ARCO VIÁRIO, KM 2, ZONA RURAL, CATALÃO - GO

PROPRIETÁRIO:

PREFEITURA MUNICIPAL DE CATALÃO - GO CNPJ: 01.505.643/0001-50

AUTOR DO PROJETO:

ENGº SAMUEL GONÇALVES CARRILHO CREA nº. 1015865852/D-GO

RESPONSÁVEL TÉCNICO:

ENGº SAMUEL GONÇALVES CARRILHO CREA nº. 1015865852/D-GO

DESCRIÇÃO:

* Vigas de respaldo (nível 715)

ÁREAS:

Verificar planta de arquitetura.

ESCALA:

INDICADAS

DATA:

28/07/2022

DESENHO:

SAYONARA (64)3443-1688

REVISÃO: